

# Bailey Lake

**Surface Area: 16 acres**

**Maximum Depth: 30 feet (9.1 meters)**

**Shoreline Length: 3,279 feet (0.62 miles)**

**Elevation: 2,998 feet (914 meters)**

## GENERAL INFORMATION

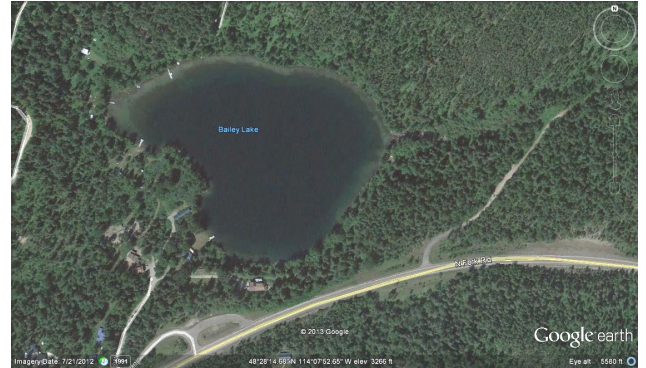
Bailey Lake is located seven miles north of Columbia Falls in Flathead County in the Glacier View Ranger District at an elevation of 1,036 meters. Surrounding land ownership is primarily private. Bailey Lake has a primitive, non-motorized, public access site requiring a short walk to the lake on the east shore. The geologic formations of the watershed that encompass Bailey Lake are dominated by glacial till (55%) with the remaining drainage area split evenly between Grinnel argillite and the Piegan group belt series.

## FISHERIES INFORMATION

Fish distribution records indicate a presence of brook trout, largemouth bass, longnose sucker, pumpkinseed, westslope cutthroat trout and yellow perch. Bailey Lake is stocked annually with westslope cutthroat trout. For more information see: <https://fwp.mt.gov/fish/stocking.html>

## ADDITIONAL INFORMATION

- Current NMLN citizen volunteers include: Susie Bouton



Location: 48. 471192 N, 114.132242 W



*Bailey Lake Volunteer, Susie Bouton, records Secchi depth.*

LAKE METRICS SUMMARY AND SCORES

Metric	Score	Description
Cold-water fish habitat	Medium	Summer temperature and oxygen profiles show that Bailey Lake has been weakly stratified at the time of summer sampling. Temperature profiles indicate the lake has been within the avoidance threshold range for salmonids at depths of up to 7 meters during July and August. Fall Hydrolab profiles show that the lake was evenly mixed during all sampling dates. In 2015, the fall temperature profile was warmest of all data collected.
Nutrient Levels	High	Bailey Lake often ranks low to medium among small lakes (surface area <100 acres) for total phosphorus, total nitrogen, and chlorophyll (a)
Nutrient Trend	consistent	Phosphorus levels are steady
Trophic Status	Oligo-trophic	Carlson's Trophic Index trends show Bailey Lake is consistently oligotrophic.
Dreissenid Colonization Potential (Calcium)	Moderate	Bailey Lake's 2010, 2011, and 2016 average calcium concentration was 24.2mg/L classifying it as a moderate risk for zebra mussel colonization. 2012 alkalinity level was reported at 140mg/L.
Known AIS infestations	None	

