

Dickey Lake

Surface Area: 585 acres

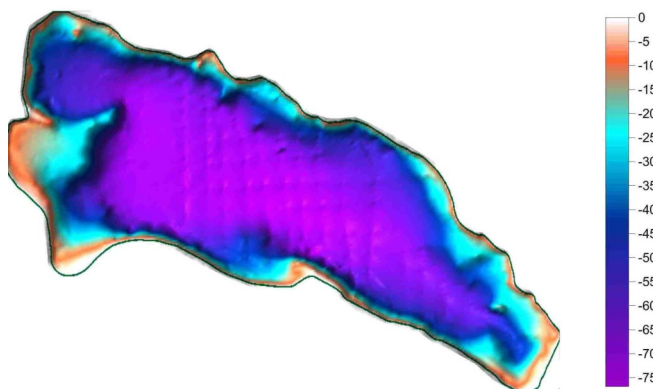
Maximum Depth: 67 feet (20.4 meters)

Shoreline Length: 25,788 feet (4.88 miles)

Elevation: 3,199 feet (975 meters)

GENERAL INFORMATION

Dickey Lake is located in Lincoln County in the Kootenai National Forest (Fortine Ranger District). Surrounding land ownership is USFS and private.



Location: 48.711011 N, 114.813857 W

FISHERIES INFORMATION

Dickey Lake is stocked annually with rainbow trout and kokanee. Fish stocking records indicate a presence of kokanee and rainbow trout. Native fish present are largescale sucker and mountain whitefish. For more information see: <https://fwp.mt.gov/fish/stocking.html>

ADDITIONAL INFORMATION

- Current NMLN citizen volunteers include: Guenter Heinz, Marty Fregerio, Robin Haidle, and Dave Leeman



Rainbow view from the Dickey Lake public boat launch. Photo courtesy Justin Brewer.

LAKE METRICS SUMMARY AND SCORES

Metric	Score	Description
Cold-water fish habitat	High	Temperature and oxygen profiles show that Dickey Lake was weakly stratified or stratified during summer sampling. Temperature profiles indicate that the lake has been within the avoidance threshold range for salmonids at depths of up to 8 meters during July and August. Oxygen profiles suggest that it has been in the avoidance concentration thresholds for salmonids at the benthic interface.
Nutrient Levels	Medium-high	Dickey Lake often ranks medium to high among large lakes for total phosphorus, total nitrogen, and chlorophyll (<i>a</i>).
Nutrient Trend	Consistent	No nutrient trend is apparent.
Trophic Status	Oligo-trophic	Carlson's Trophic Index trend shows Dickey Lake is consistently oligotrophic.
Dreissenid Colonization Potential (Calcium)	High	Dickey Lake's 2011/2016 average calcium concentration was 33.3mg/L classifying it as a high risk for zebra mussel colonization. The 2012 alkalinity level was reported at 140mg/L.
Known AIS infestations	None	In 2011, 2012, and 2014, EWM surveys were conducted near the public access site yielding no suspect results. Very few macrophytes were represented in the littoral zone during the survey. In 2015, Dickey Lake ranked highest among large lakes for total phosphorus.

