

Murphy Lake

Surface Area: 141 acres

Maximum Depth: 71 feet (21.6 meters)

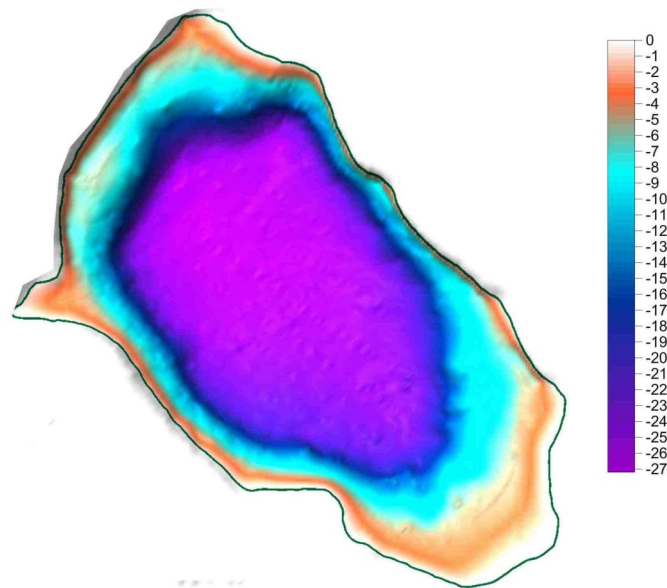
Drainage Size: 3,006 acres

Shoreline Length: 11,706 feet (2.22 miles)

Elevation: 3,150 feet (960 meters)

GENERAL INFORMATION

Murphy Lake is located in Lincoln County in the Kootenai National Forest of the Fortine Ranger District. Surrounding land ownership is 100% USFS. There is one primitive motorized access located on the north end of the lake. The geology of the drainage basin is a composite of alluvium (52%), Ravalli group belt series (26%) and the Piegan group belt series (Ellis & Craft, 2008).



Location: 48.73497 N, 114.85892 W

FISHERIES INFORMATION

Murphy Lake is stocked annually with largemouth bass. Fish distribution includes largemouth bass and northern pike. For more information see: <https://fwp.mt.gov/fish/stocking.html>

ADDITIONAL INFORMATION

- Current NMLN citizen volunteers include: Robin Haidle and Dave Leeman



Murphy Lake boat ramp with informational signage on AIS.

LAKE METRICS SUMMARY AND SCORES

Metric	Score	Description
Cold-water fish habitat	Medium	Temperature and oxygen profiles show that Murphy Lake was evenly mixed or weakly stratified during summer sampling. Temperature profiles indicate that the lake has been within the avoidance threshold range for salmonids at depths of up to 7 meters during July and August.
Nutrient Levels	Medium	Murphy Lake often ranks medium among medium lakes for total phosphorus, total nitrogen, and chlorophyll (<i>a</i>).
Nutrient Trend	Consistent	No trend is apparent.
Trophic Status	Oligo-trophic	Carlson's Trophic Index trend shows Murphy Lake is consistently oligotrophic.
Dreissenid Colonization Potential (Calcium)	High	Murphy Lake's 2010, 2011, and 2016 average calcium concentration was 28.5mg/L classifying it as a high risk for zebra mussel colonization.
Known AIS infestations	None	

