

Blanchard Lake

Surface Area: 143 acres

Maximum Depth: 30 feet (9.1 meters)

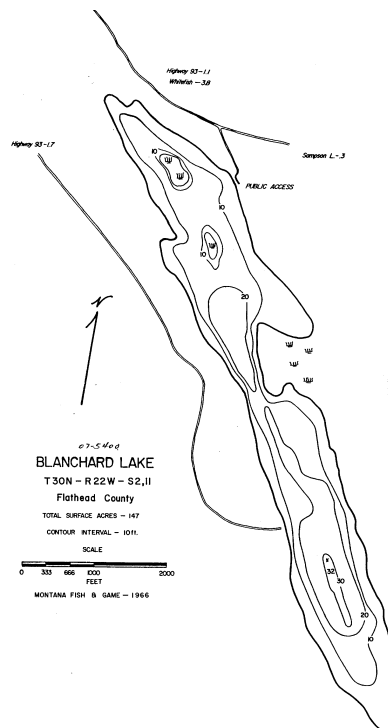
Drainage Size: 2,649 acres

Shoreline Length: 9,107 feet (1.72 miles)

Elevation: 3,179 feet (969 meters)

GENERAL INFORMATION

The lake is located in Flathead County three miles west of Whitefish. Blanchard Lake has one motorized public access on the far north end of the lake. The geologic formations in the watershed are dominated by glacial till (54%) with the remaining area in the Piegan group belt series (Ellis & Craft, 2008).



Location: 48.22668 N, 114.22008 W

FISHERIES INFORMATION

Blanchard Lake is stocked annually with largemouth bass. Fish stocking and population survey records indicate a presence of largemouth bass, northern pike, yellow perch, and pumpkinseed. For more information see: <https://fwp.mt.gov/fish/stocking.html>

ADDITIONAL INFORMATION

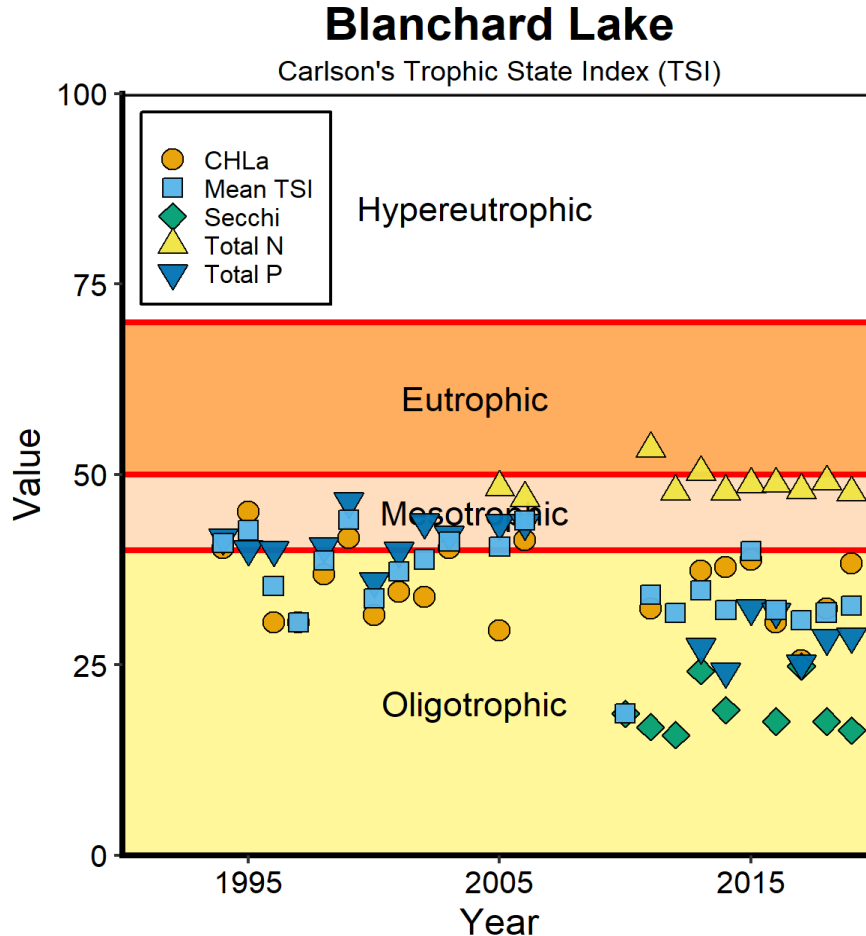
- A macrophyte survey was conducted in 2014
- Current NMLN citizen volunteers include: Cameron Blake and Tiffany Gregg

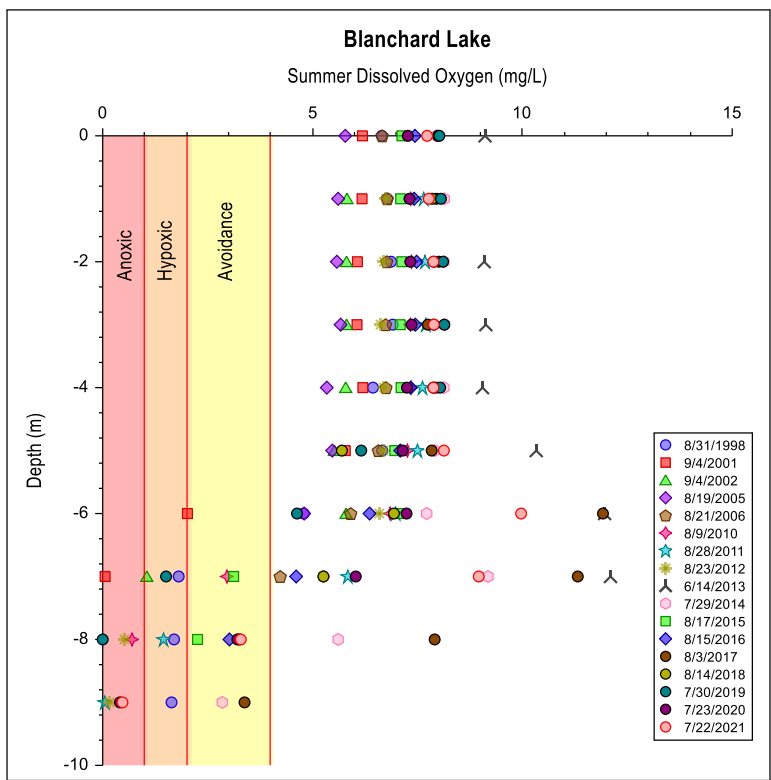
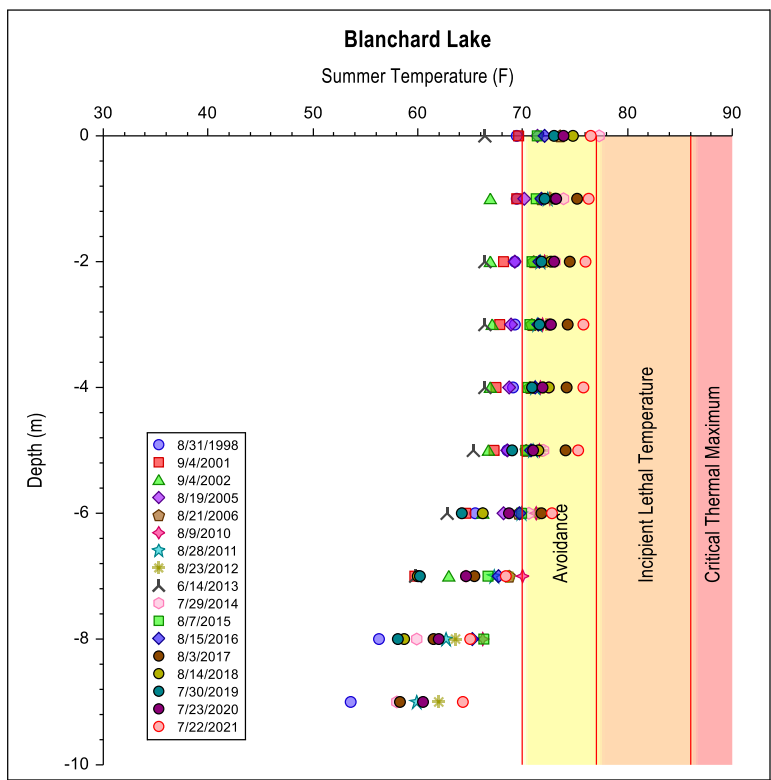


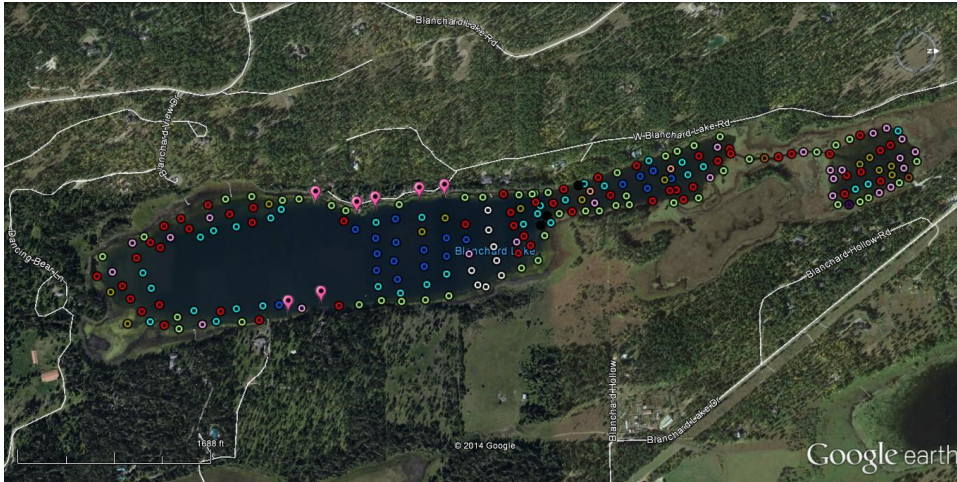
Former 2012 WLI intern Megan Powell from Westminster College in Salt Lake City, UT and volunteer Carol Treadwell-Steitz monitor Blanchard Lake.

LAKE METRICS SUMMARY AND SCORES

Metric	Score	Description
Cold-water fish habitat	Low	Temperature and oxygen profiles show that Blanchard Lake was either stratified or weakly stratified during summer sampling dates. Temperature profiles indicate that the lake has been within the avoidance threshold range for salmonids at depths of up to 6 meters during August. Oxygen profiles show that Blanchard Lake has been between avoidance and anoxic concentration thresholds for salmonids at depths greater than 6 meters. Blanchard Lake is considered a warm water fishery.
Nutrient Levels	Medium	Blanchard Lake often ranks medium for medium lakes for total phosphorus, total nitrogen, and chlorophyll (<i>a</i>).
Nutrient Trend	consistent	No trend is apparent.
Trophic Status	Meso-oligotrophic	Carlson's Trophic Index trend shows Blanchard Lake is consistently meso-oligotrophic.
Dreissenid Colonization Potential (Calcium)	High	The lake's 2011/2016 average calcium concentration was 39.5mg/L classifying it as a high risk for zebra mussel colonization. The 2012 alkalinity level was reported at 82mg/L.
Known AIS infestations	Two	Yellow iris and fragrant water lily



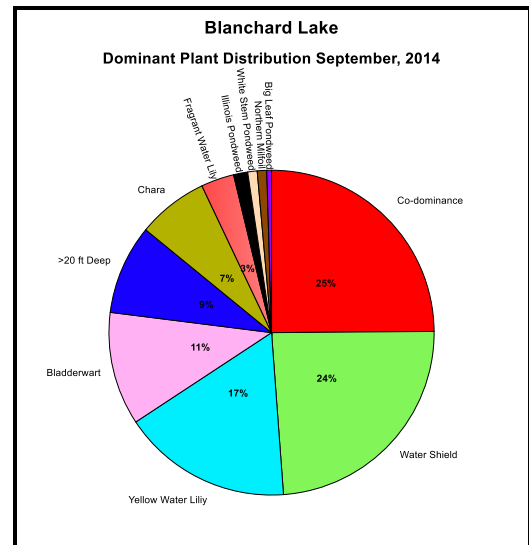




A macrophyte survey was conducted on Blanchard Lake on September 3, 2014. A total of 222 sites were surveyed for plants/algae. Dense macrophyte beds exist in Blanchard Lake and several plant species were found during the survey. Blanchard is considered a warm water fishery, and oxygen levels drop substantially during summer months after the lake becomes stratified.

Although northern milfoil was not a dominant plant, it exists throughout much of the lake. The pink teardrop icons on the map represent fragrant water lily, an invasive plant that was intentionally planted in Blanchard and other nearby lakes as an ornamental.

Co-dominant Plant Species Composition	Co-dominant %
Yellow Water Lily /Bladderwort	20.75
Water Shield / Bladderwort	11.32
Yellow Water Lily / Bladderwort / Chara	9.43
Yellow Water Lily / White Stem Pondweed	7.55
Yellow Water Lily / Chara	5.66
Bladderwort / Chara	5.66
Northern Milfoil / Chara	3.77
Yellow Water Lily / Bladderwort / Illinois Pondweed	3.77
Other	32.08



Yellow water lily and water shield are emergent plants that have floating leaves. During the summer months these plants blanket the surface of Blanchard Lake. Photo courtesy Kim Schierl.