

Flathead Lake (Skidoo Bay)

Surface Area: 122,425 acres
Maximum Depth: 368 feet (112.2 meters)
Skidoo Bay Depth: 76 feet (23 meters)
Drainage Size: 4,522,476 acres
Shoreline Length: 850,080 feet (170 miles)
Elevation: 2,995 feet (913 meters)

GENERAL INFORMATION

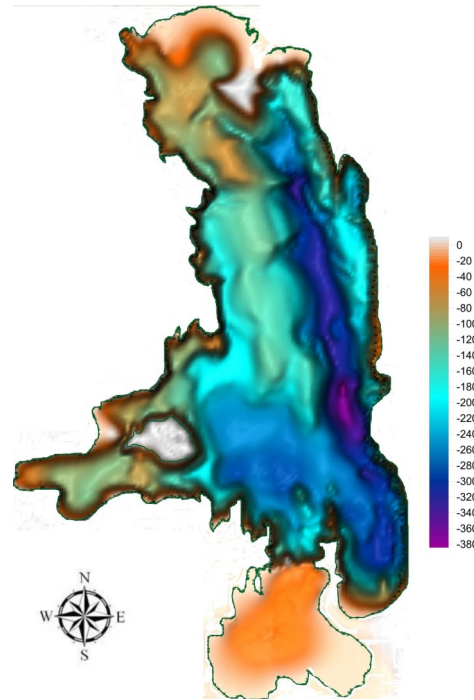
Flathead Lake is located south of Kalispell between the Mission and Salish Mountain Ranges. Skidoo Bay is located on the southeastern corner of the lake near Polson. The geology of the Flathead Basin is a composite of numerous belt series formations: Appekunny argillite (4%), Grinnell argillite (6%), Missoula group (18%), Piegan group (10%), Ravalli group (4%), Siyeh limestone (3%) and Wallace formation (5%); alluvium (14%), undifferentiated Cambrian (3%), glacial (8%) and undifferentiated tertiary sedimentary rocks (5%). The geology includes the Canadian portion of the watershed, hence the slight overlap in conventional designation of formations. All geological formations that composed <3% of the total basin composition were not listed (Ellis & Craft, 2008).

FISHERIES INFORMATION

Native fish found in this large body of water. Include: Bull trout, Westslope cutthroat trout, Mountain whitefish, Pygmy whitefish, Largescale sucker, Longnose sucker, Northern pikeminnow, Peamouth chub, Redside shiner, Slimy sculpin, Longnose dace. Introduced sport fish include lake trout, rainbow trout, lake whitefish, Brook trout, Yellowstone cutthroat trout, Golden trout, Brown trout, Kokanee salmon, Arctic grayling, Yellow perch, Northern pike, Largemouth bass, Smallmouth bass, Black bullhead, Central mudminnow, Walleye, White sucker, and Black crappie. For more information see: <https://fwp.mt.gov/fish/stocking.html>

ADDITIONAL INFORMATION

- This is the largest lake in the study with multiple volunteers and sample sites. The program has had up to 16 monitoring locations on Flathead Lake. Currently, there are seven monitoring locations on the lake and discussed in this report. Data for historical monitoring sites can be obtained by contacting WLI. More information on Flathead Lake can be found at <https://flbs.umt.edu/newflbs/flathead-lake/lake-facts/>
- Skidoo Bay experienced a large, intense fire on its eastern shore in July 2021.
- Current NMLN citizen volunteers include: Roger Smith



Skidoo Bay Location: 47.756986 N, 114.0550485 W

LAKE METRICS SUMMARY AND SCORES

Metric	Score	Description
Cold-water fish habitat	High	Temperature and oxygen profiles show that Skidoo Bay was stratified during summer sampling. The summer temperature profile indicates that the bay was within the avoidance threshold range for salmonids at depths of up to 11 meters.
Nutrient Levels	Medium-low	Flathead Lake (Skidoo Bay) often ranks low to medium among large lakes for total phosphorus, total nitrogen, and chlorophyll (a).
Nutrient Trend	Decreasing	Phosphorous and nitrogen are decreasing in Skidoo Bay.
Trophic Status	Oligo-trophic	Carlson's Trophic Index trend shows Flathead Lake is consistently oligotrophic.
Dreissenid Colonization Potential (Calcium)	High	Calcium concentrations collected in 2010, 2011 and 2016 ranged from a low of 22mg/L (Dayton) to a high of 27 mg/L (Mack Alley). The average calcium concentration for all Flathead lake samples was 24.3mg/L. The average alkalinity was reported at 87mg/L.
Known AIS infestations	Moderate	Mysis Shrimp and Flowering Rush

Flathead Lake, Skidoo Bay

