

Holland Lake

Surface Area: 414 acres

Maximum Depth: 156 feet (47.5 meters)

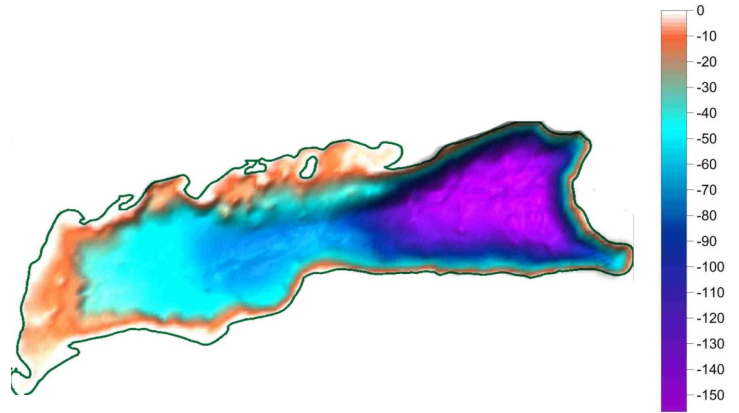
Drainage Size: 423 acres

Shoreline Length: 26,055 feet (4.93 miles)

Elevation: 4,199 feet (1,280 meters)

GENERAL INFORMATION

Holland Lake is located fifteen miles north of Seeley Lake in Missoula County. Surrounding land ownership is entirely USFS. Holland Lake has one motorized public access on the east end of the lake. The lake can also be accessed from the campground on the northern side of the lake. The basin is composed of both the Piegan group (39%) and Missoula group (32%) belt series and alluvium (20%) (Ellis & Craft, 2008).



Location: 47.449659 N, 113.589013 W

FISHERIES INFORMATION

Fish distribution records indicate a presence of bull trout, kokanee, largescale sucker, longnose sucker, mountain whitefish, northern pike minnow, peamouth chub, rainbow trout, westslope cutthroat trout and yellow perch. For more information see: <https://fwp.mt.gov/fish/stocking.html>

ADDITIONAL INFORMATION

- Flathead National Forest and Swan Valley Connections are working together to manage the fragrant water lily invasion near the boat launch.
- Current NMLN citizen volunteers include: None



Volunteers Rob Rich and Bill Beers on Holland Lake.

LAKE METRICS SUMMARY AND SCORES

Metric	Score	Description
Cold-water fish habitat	High	Temperature and oxygen profiles show that Holland Lake was stratified during summer sampling. Temperature profiles indicate that the lake has been within the avoidance threshold range for salmonids at depths of up to 6 meters during July and August.
Nutrient Levels	Low	Holland Lake often ranks low among medium lakes for total phosphorus, total nitrogen, and chlorophyll (a).
Nutrient Trend	Decreasing	Phosphorous and nitrogen have been decreasing in the past few years.
Trophic Status	Oligo-trophic	Carlson's Trophic Index trend shows Holland Lake is consistently oligotrophic.
Dreissenid Colonization Potential (Calcium)	Moderate	Holland Lake's 2011/2016 average calcium concentration was 21.2mg/L classifying it as a moderate risk for zebra mussel colonization. The 2012 alkalinity level was reported at 77mg/L.
Known AIS infestations	Mild	Fragrant water pond lily

Holland Lake

