

Lindbergh Lake

Surface Area: 832 acres

Maximum Depth: 121 feet (36.9 meters)

Shoreline Length: 52,800 feet (10 miles)

Elevation: 4,400 feet (1,341 meters)

GENERAL INFORMATION

Lindbergh Lake is located in the headwaters of the Swan Range on the eastern side of the Mission Mountain Range south of Condon.

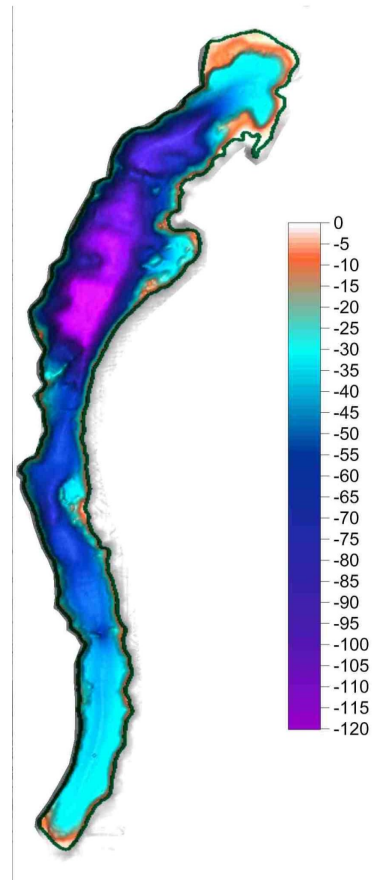
There is one motorized public access site at the north end of the lake.

FISHERIES INFORMATION

Lindbergh Lake is stocked annually with either kokanee or westslope cutthroat trout. Fish distribution records indicate a presence of bull trout, kokanee, lake trout, largescale sucker, longnose sucker, mountain whitefish, northern pike minnow, pygmy whitefish, rainbow trout, westslope cutthroat trout, and yellow perch. For more information see: <https://fwp.mt.gov/fish/stocking.html>

ADDITIONAL INFORMATION

- Current NMLN citizen volunteers include: Geoff Knight, Judd Dunley & Penny and Dave Johnson



Location: 47.38825 N, 113.73553 W



Volunteers Dave, Judd and Geoff help monitor Lindbergh Lake.

LAKE METRICS SUMMARY AND SCORES

Metric	Score	Description
Cold-water fish habitat	High	Temperature and oxygen profiles show that Lindbergh Lake was stratified or weakly stratified during summer sampling dates. The 2006 oxygen concentration was extremely low relative to other summer sampling dates. Hydrolab profiles show that the lake was weakly stratified during the October sampling date and mixed during the November sampling date. Temperature and dissolved oxygen profiles are outside the avoidance thresholds for salmonids throughout the water column.
Nutrient Levels	Medium	Lindbergh Lake often ranks medium among large lakes for total phosphorus, total nitrogen, and chlorophyll (<i>a</i>).
Nutrient Trend	Consistent	No trend is apparent.
Trophic Status	Oligo-trophic	Carlson's Trophic Index trend shows Lindbergh Lake is consistently oligotrophic.
Dreissenid Colonization Potential (Calcium)	Low	Lindbergh Lake's 2011/2016 average calcium concentration was 5.4 mg/L classifying it as a low risk for zebra mussel colonization. The 2012 alkalinity level was reported at 15 mg/L.
Known AIS infestations	None	

Lindbergh Lake

Carlson's Trophic State Index (TSI)

