

## Little Bitterroot Lake

**Surface Area: 2,970 acres**

**Maximum Depth: 246 feet (75 meters)**

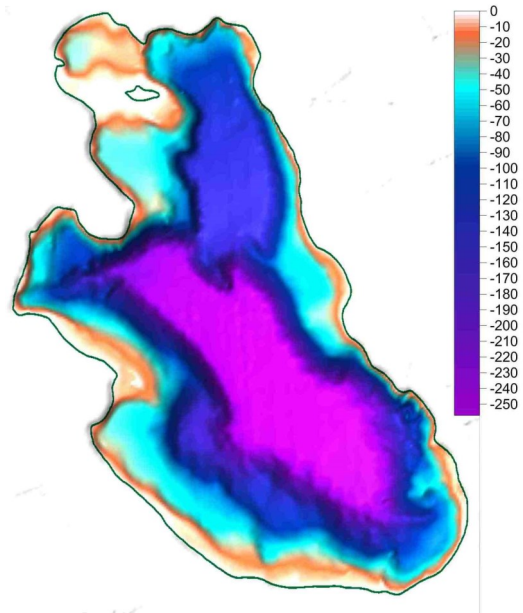
**Drainage Size: 21,987 acres**

**Shoreline Length: 58,080 feet (11 miles)**

**Elevation: 3,996 feet (1,218 meters)**

### GENERAL INFORMATION

Little Bitterroot Lake is located in Flathead County. It is surrounded primarily by private land ownership. The catchment of Little Bitterroot Lake is composed of the Wallace formation belt series (31%), alluvium (28%), Picard formation belt series (17%), and the Ravalli group belt series (11%) (Ellis & Craft, 2008).



Location: 48.125527 N, 114.716626 W

### FISHERIES INFORMATION

Little Bitterroot Lake is stocked annually with kokanee and rainbow trout. Fish distribution records indicate a presence of kokanee, longnose sucker, peamouth chub, pygmy whitefish, rainbow trout, redbside shiner, westslope cutthroat, and yellow perch. For more information see: <https://fwp.mt.gov/fish/stocking.html>

### ADDITIONAL INFORMATION

- Current NMLN citizen volunteers include: Lauren & Craig Shotnik
- Little Bitterroot Lake Association is a non-profit organization, dedicated to the proper care and stewardship, of Little Bitterroot Lake — <http://littlebitterrootlakeassoc.org/1801.html>



*2013 WLI intern Logan Seipel from University of Wisconsin, Steven's Point (right) and volunteers Lauren and Craig Shotnik.*

## LAKE METRICS SUMMARY AND SCORES

| Metric                                      | Score         | Description  |
|---|---------------|--|
| Cold-water fish habitat                     | High          | Temperature and oxygen profiles show that Little Bitterroot Lake was stratified during all summer sampling dates. Temperature profiles indicate that the lake has been within the avoidance threshold range for salmonids at depths of up to 5 meters during August. |
| Nutrient Levels                             | Medium        | Little Bitterroot Lake often ranks medium among large lakes for total phosphorus, total nitrogen, and chlorophyll ( <i>a</i> ).  |
| Nutrient Trend                              | Decreasing    | Phosphorous is decreasing.   |
| Trophic Status                              | Oligo-trophic | Carlson's Trophic Index trend shows Little Bitterroot Lake is consistently oligotrophic.   |
| Dreissenid Colonization Potential (Calcium) | Low           | Little Bitterroot Lake's 2010, 2011, and 2016 average calcium concentration was 13.2 mg/L classifying it as a low risk for zebra mussel colonization. The 2012 alkalinity level was reported at 49 mg/L.   |
| Known AIS infestations                      | None          | In 2011 and 2012 a EWM survey was conducted on Little Bitterroot near the public access yielding no suspect results. Additional surveying is recommended based on lake size, level of recreational use, and ease of access.  |

