

# Whitefish Lake

**Surface Area: 3,315 acres**

**Maximum Depth: 223 feet (68 meters)**

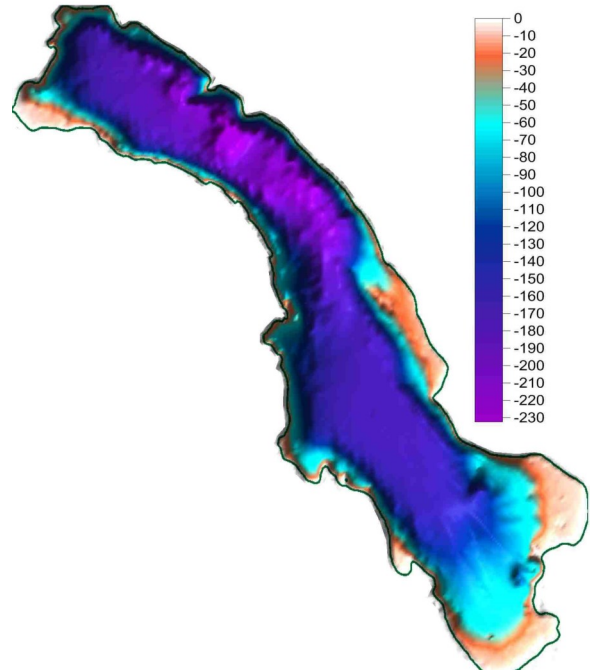
**Drainage Size: 76,519 acres**

**Shoreline Length: 83,688 feet (15.85 miles)**

**Elevation: 2,999 feet (913 meters)**

## GENERAL INFORMATION

Whitefish Lake is located in the town of Whitefish at the southern end of the Whitefish Mountain Range. The geology of the basin is largely composed of the Piegan group belt series (42%) and alluvium (43%), with smaller formations of Grinnel Argillite (8%) and Ravalli group (2%) belt series. There are two motorized public access sites on Whitefish Lake. One is located on the south end of the lake at City Beach and the other is located on the southwest corner of the lake at Whitefish Lake State Park.



Location: 48.47135 N, 114.39284 W

## FISHERIES INFORMATION

Fish distribution records indicate a presence of brook trout, bull trout, lake trout, lake whitefish, largescale sucker, longnose sucker, mountain whitefish, northern pike, northern pike minnow, peamouth, pygmy whitefish, redbside shiner, westslope cutthroat, yellow perch and black bullhead. Whitefish Lake is stocked annually with westslope cutthroat trout. For more information see: <https://fwp.mt.gov/fish/stocking.html>.

## ADDITIONAL INFORMATION

- Whitefish Lake Institute, a local non profit dedicated to the health of the Whitefish Lake Watershed, has been collecting water quality data at two locations on Whitefish Lake since 2007. WLI additionally collects water chemistry and discharge data on the six major tributaries to Whitefish Lake. A detailed status report for the Whitefish Lake watershed was published in 2015. Visit [whitefishlake.org](http://whitefishlake.org) for more information.
- Current NMLN citizen volunteers include: Jacob Henson



*Whitefish Lake with nutrient plume resulting from late spring runoff from Swift and Lazy Creeks.*

LAKE METRICS SUMMARY AND SCORES

Metric	Score	Description
Cold-water fish habitat	High	Temperature and oxygen profiles show that Whitefish Lake was evenly stratified during summer sampling dates. Temperature profiles indicate that the lake has bordered on the avoidance threshold range for salmonids at depths of up to 7 meters during August.
Nutrient Levels	Low	Whitefish Lake often ranks low among large lakes (surface area >500 acres) for total phosphorus, total nitrogen, chlorophyll (a)
Nutrient Trend	Consistent	No nutrient trend is apparent
Trophic Status	Oligo-trophic	Carlson's Trophic Index trends show Whitefish Lake as consistently Oligotrophic.
Dreissenid Colonization Potential (Calcium)	Moderate	Whitefish Lake's 2011/2016 average calcium concentration was 24.8 mg/L classifying it as a moderate risk for zebra mussel colonization.
Known AIS infestations	Mild	Mysis shrimp

